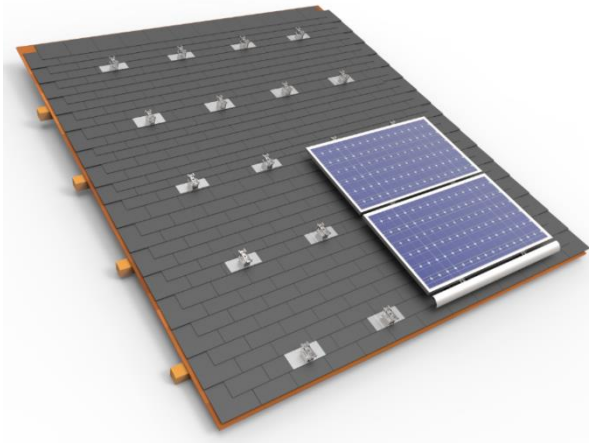




# Introduction of Asphalt roof rack

ACES-RA10



## 1.Features:

A. **Rail-less rack:** The rail-less solution not only reduces the costs a lot, but also make the installation work very easy.

B. **High corrosion resistance:** Flashing plate is made by aluminum 6063-T6, module holder is made by SS304.

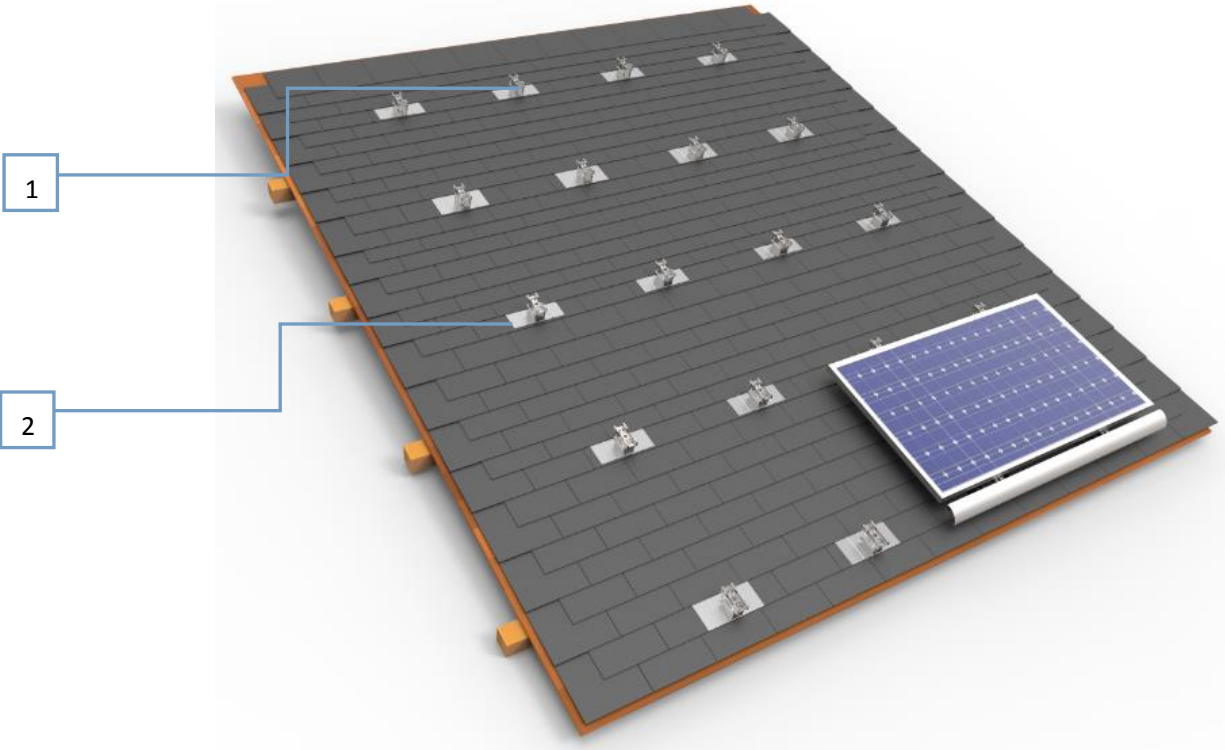
C. **No clamps:** The holder buckles the module

D. **Quick installation:** 3 steps finish installation. Saves **50%** of traditional installation time.

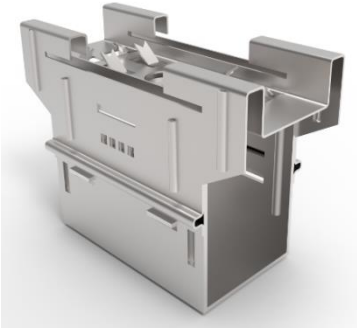
E. **High quality:** Pass **tensile test** and **uplift test**. The designed strength resists **40m/s \* wind load** and **0.8kn/m<sup>2</sup> snow load**.

\* Higher Wind Load Version are under development.

## 2.Components



1



Name: Module holder

Material: SS 304

2

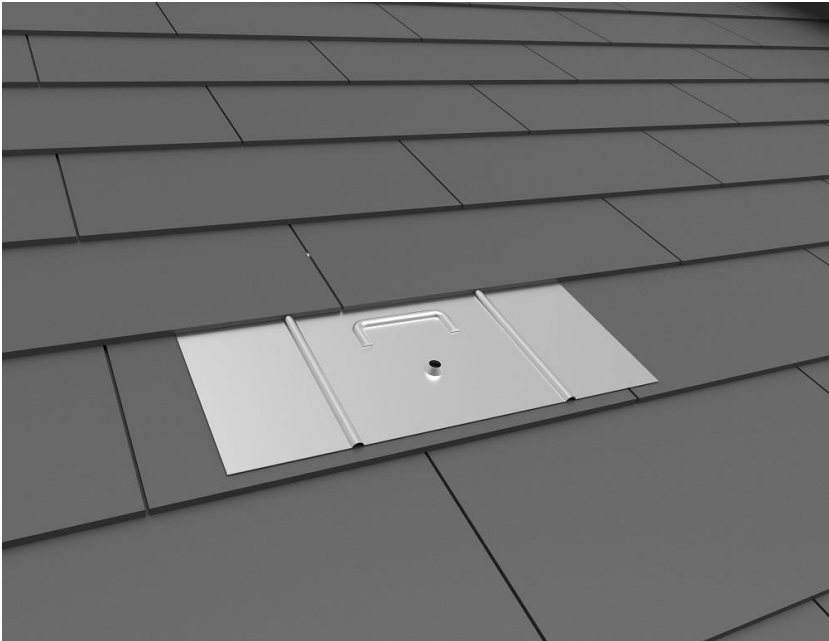


Name: Flashing plate

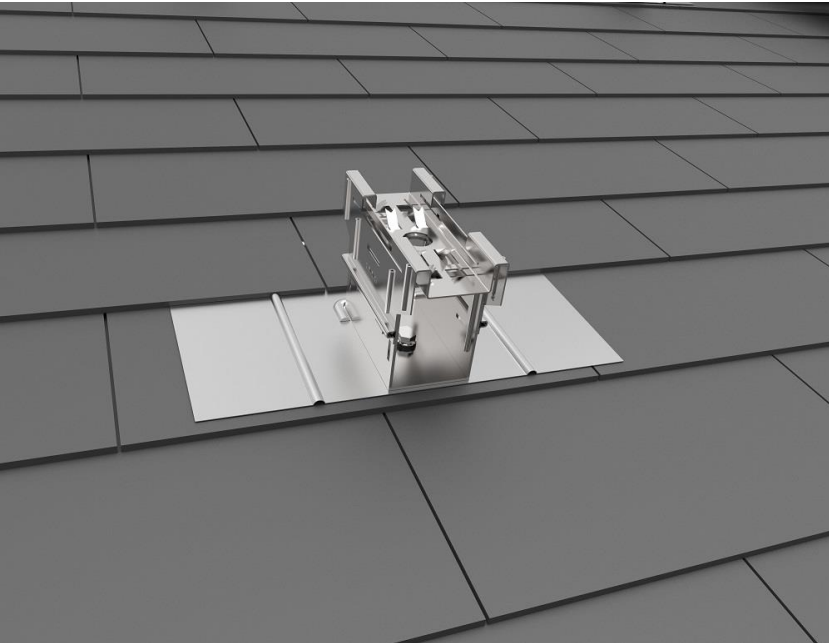
Material: Aluminum 6063 T6

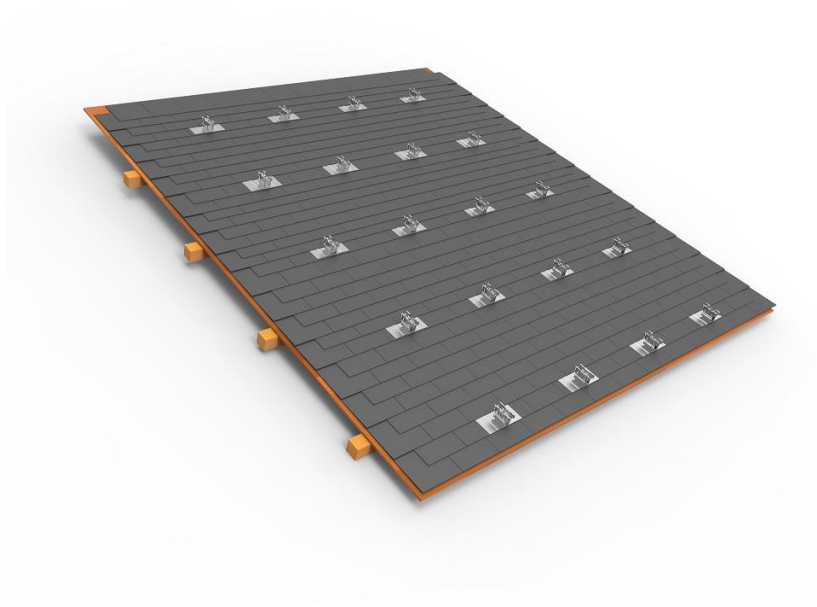
**3.Installation steps (3 steps):**

**A. INSTALL FLASHING PLATE**



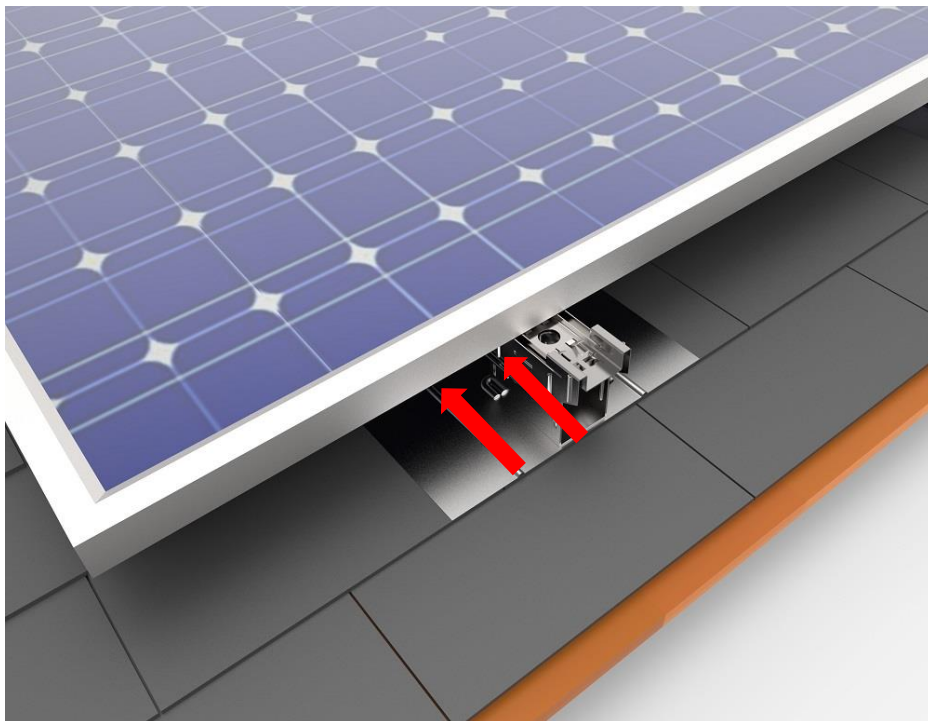
**B. INSTALL MODULE HOLDER WITH ONE SCREW**



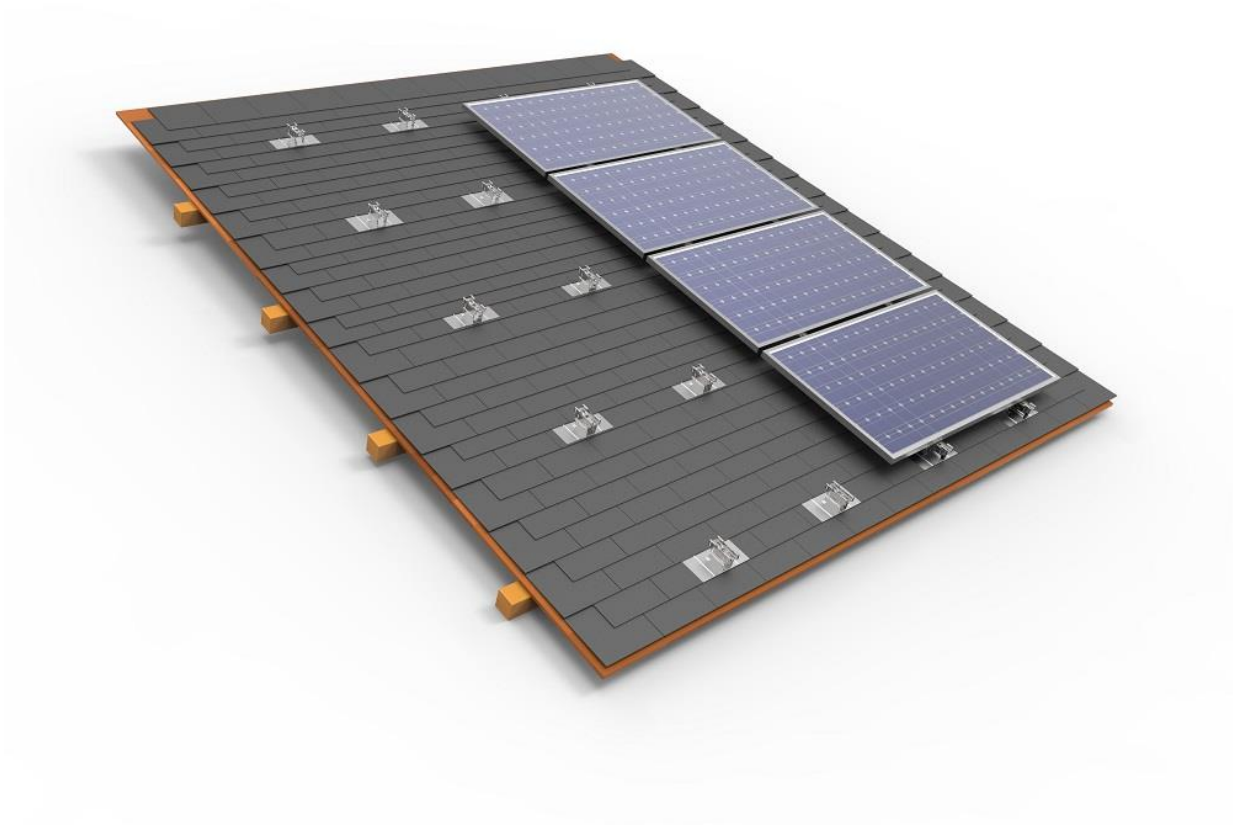
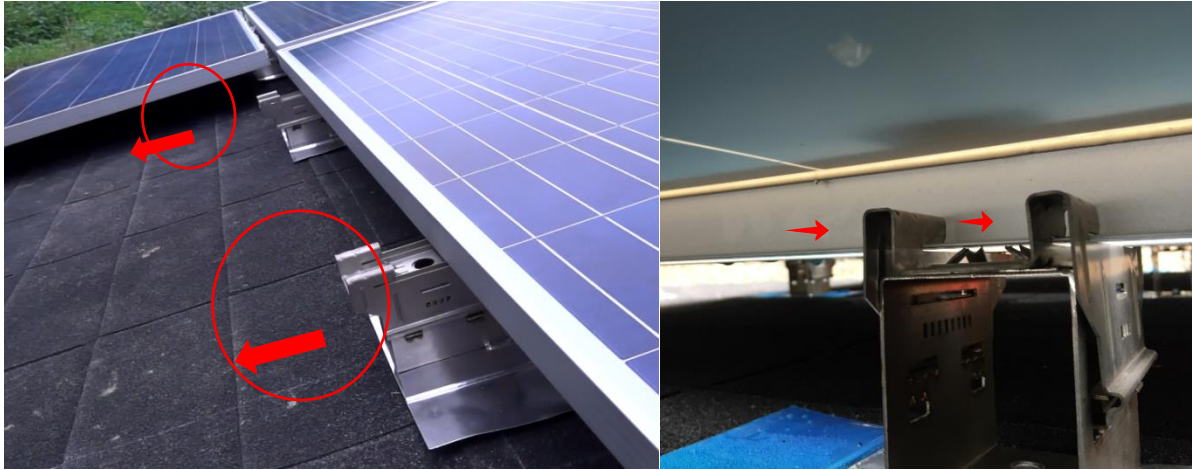


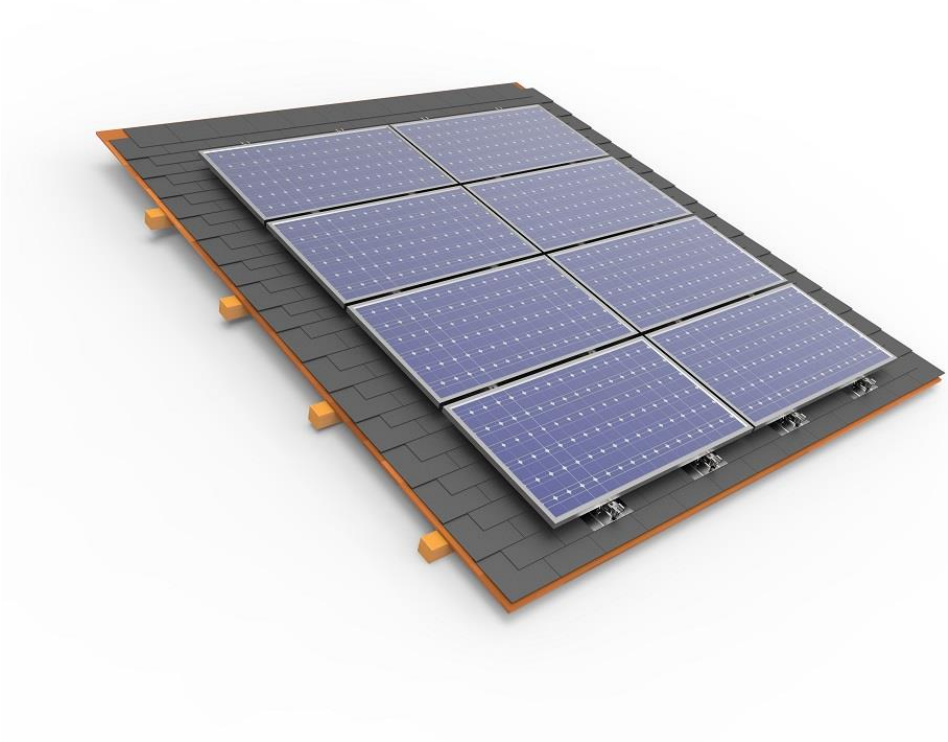
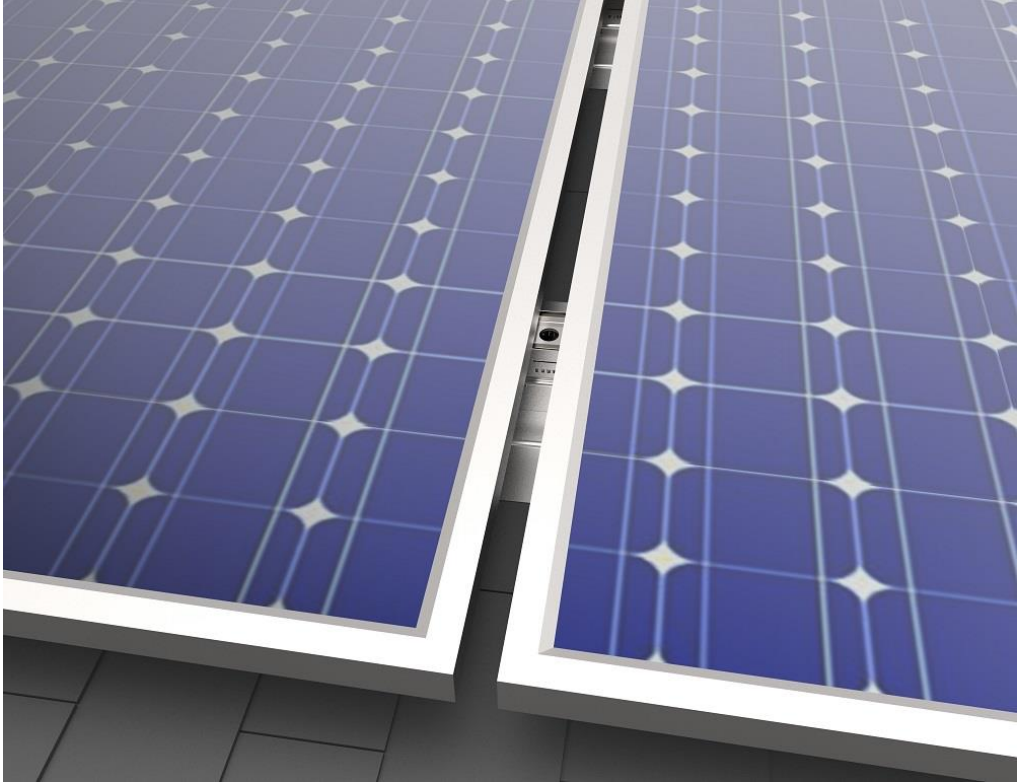
#### C. INSTALL MODULES:

1. PUT MODULE ON MODULE HOLDER
2. PULL THE MODULE BOTTOM TO LOCK UPPER FRAME WITH MODULE HOLDER



3.PULL MODULE HOLDER TO LOCK MODULE HOLDER WITH BOTTOM FRAME





18 Culnen Drive, Branchburg, NJ 08876 +1-888-900-1581 Email: [sales@atlanticces.com](mailto:sales@atlanticces.com) Website: [www.atlanticces.com](http://www.atlanticces.com)

# SOLAR MOUNTING SYSTEM SPECIALIST

**Atlantic Clean Energy Supply, LLC**



PERFECT SOLUTION, EASY INSTALLATION

Tel: +1-888-900-1581

Fax: +1-888-900-4560

Email: [sales@atlanticces.com](mailto:sales@atlanticces.com)

Website: [www.atlanticces.com](http://www.atlanticces.com)

Add: No.18. Culnen Drive, Branchburg, NJ 08876